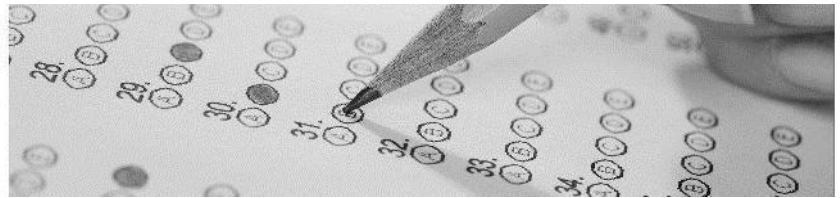


COMPUTER PARALLEL PREP PRE-ENGINEERING

CHAPTER - 1 (2ND YEAR)

- Q.1** The manipulation and processed data are called:
(a) Object (b) Information
(c) Data (d) File
- Q.2** A collection of raw facts and figures is called:
(a) Files (b) Data
(c) Data Processing (d) Information
- Q.3** Which of the following is an example of a database?
(a) Phonebook (b) Library catalog
(c) Student records (d) All of above
- Q.4** SQL stands for:
(a) Structure Query Language (b) Sort Query Language
(c) Self Query Language (d) Seek Query Language
- Q.5** The data can be recovered in case of loss by using:
(a) Master File (b) Backup File
(c) Transaction File (d) Data File
- Q.6** All records in a file have the same:
(a) Contents (b) Structure
(c) Data (d) File type
- Q.7** Which of the following type of file requires longest processing time?
(a) Sequential file (b) Random file
(c) Indexed sequential file (d) Direct access file
- Q.8** Which of the following is not a file type from usage point of view?
(a) Master file (b) Transaction file
(c) Backup file (d) Index sequential file
- Q.9** Which of the following database models is often referred to as an Inverted Tree?
(a) Hierarchical (b) Network
(c) Relational (d) Object-oriented
- Q.10** The problem of synonym occurs in:
(a) Sequential files (b) Direct or random files
(c) Indexed sequential files (d) Master File
- Q.11** Which of the following is handled by DBMS?
(a) Data integrity (b) Data Security
(c) Data independence (d) All of above
- Q.12** Which of the following data model stored data in the rows and column?
(a) Network data model (b) Object data model
(c) Relational data model (d) Hierarchical data model
- Q.13** A database is an organized collection of which type of related data?
(a) Logically (b) Physically
(c) Loosely (d) Badly
- Q.14** Which of following is not an advantage of database?
(a) Reliability (b) Data sharing
(c) Centralized storage of data (d) User training
- Q.15** Which of the following data model is more flexible?
(a) Network data model (b) Data hierarchical model
(c) Data relational model (d) Object oriented data model
- Q.16** The process of getting data from DBMS:
(a) Summarizing (b) Sorting
(c) Classifying (d) Data retrieval



- Q.17 Which of following is not the extension of database file?**
(a) .dat (b) .dbf
(c) .wks (d) .mdb
- Q.18 A database containing all students in class would store basic data of students in:**
(a) Record (b) Field
(c) Cell (d) File
- Q.19 A feature of database management system which store data definition:**
(a) Data Dictionary (b) Backup recovery
(c) Report generator (d) Data Dependence
- Q.20 In database environment, duplication of same data represented in two different files is known as:**
(a) Data inconsistency (b) Data redundancy
(c) Data overflow (d) Invalid data
- Q.21 The process of storing and retrieval of data from files is called:**
(a) Data capturing (b) Data manipulation
(c) Managing output results (d) Data Analysis
- Q.22 Which of the following objective of database enables the user to modify data structures without affecting existing programs?**
(a) Data independence (b) Data dependence
(c) Data integration (d) Data relationship
- Q.23 A request for information from a database in database terminology is called:**
(a) Report (b) Letter
(c) Table (d) Query
- Q.24 Which of the following objectives relate with database management system software?**
(a) Data Integrity (b) Data Integration
(c) Availability (d) All of these
- Q.25 In DBMS, the major components are:**
(a) Hardware (b) Software
(c) Data (d) All of these
- Q.26 Which of the following is also known as data set?**
(a) Record (b) Field
(c) Cell (d) File
- Q.27 Which one of the following is an advantage of database management approach?**
(a) Programs are independent of data format
(b) Reduced security and the control of data
(c) Increased duplication of data
(d) All of above
- Q.28 Which software is used to maintain the data base by manipulating the data, record and files?**
(a) Query language (b) Utilities
(c) Data dictionary (d) Database Integrity
- Q.29 Which of following are disadvantages of DBMS?**
(a) System overhead (b) Training of Staff
(c) Need of data dictionary (d) All of these
- Q.30 Which of the following data model is use to store data in form of table/relation?**
(a) Network Model (b) Hierarchical Model
(c) Relational Model (d) Object Data Model